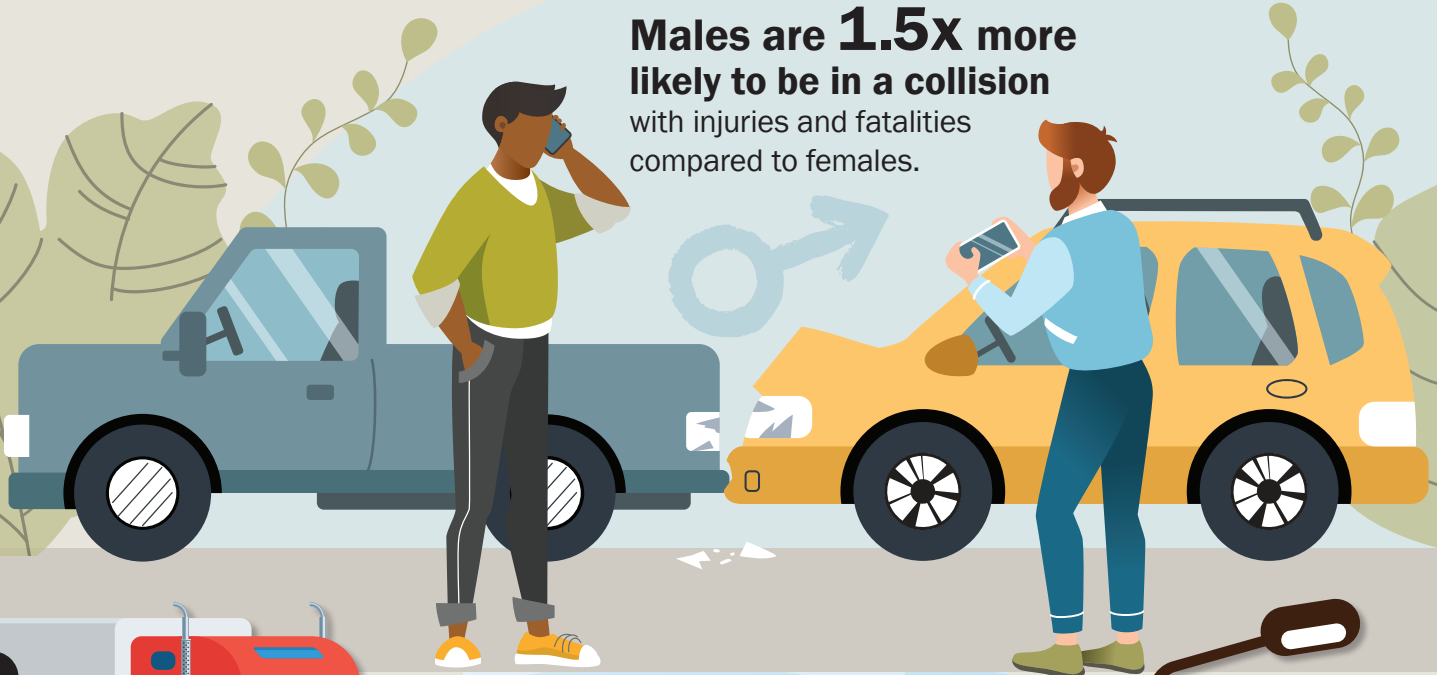


Contributing Factors to Work-Related Motor Vehicle Collisions in Saskatchewan

Recently, the Saskatchewan Workers' Compensation Board (WCB) and SGI compared data from 2009 to 2017 to determine which contributing factors are most likely to cause motor vehicle crashes with injuries or fatalities.

Males are **1.5x** more likely to be in a collision with injuries and fatalities compared to females.



2x



Commercial trucks and semi-trailers are 2x more likely to produce a collision with injuries or fatalities than passenger vehicles.

Which road surfaces are most likely to cause a collision with injuries or fatalities?

- Gravel roads
- Wet roads
- Snow-covered roads
- Muddy roads

Gravel is **3x** more likely to cause a collision with injuries or fatalities.



Single-vehicle collisions are more likely to result in injuries or fatalities compared to multi-vehicle collisions.



Collisions with injuries and fatalities are more likely in **winter** than summer.



What impact does weather have?

Bad weather such as rain, snow, hail, fog and strong winds is **1.27x** more likely to cause severe crashes with injuries or fatalities.



Driving in the **dark or at dawn** is **1.8x** more likely to produce a collision with injuries or fatalities.



Which contributing factors are most likely to cause a collision with injuries or fatalities?

- Alcohol impairment
- Wildlife
- Weather
- Careless driving
- Taking evasive action
- Driver inexperience
- Failure to yield
- Speeding
- Road conditions

